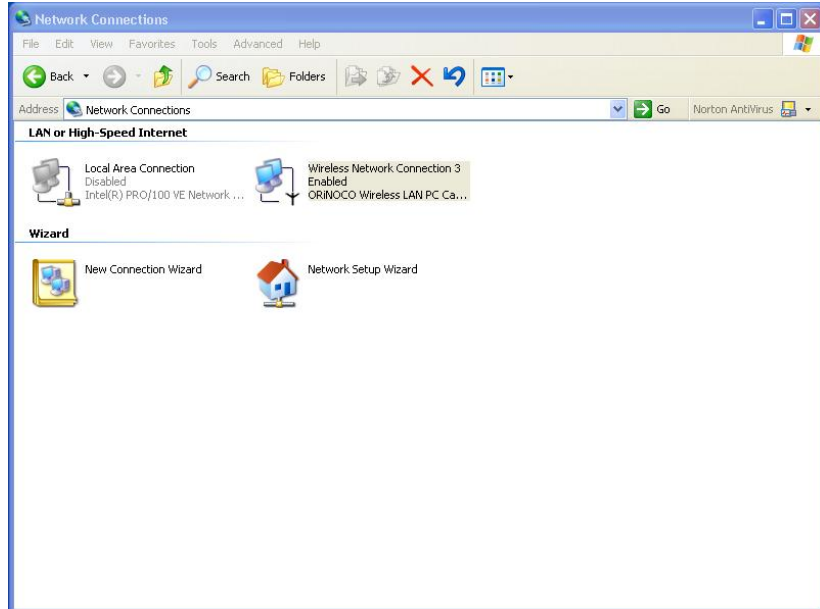


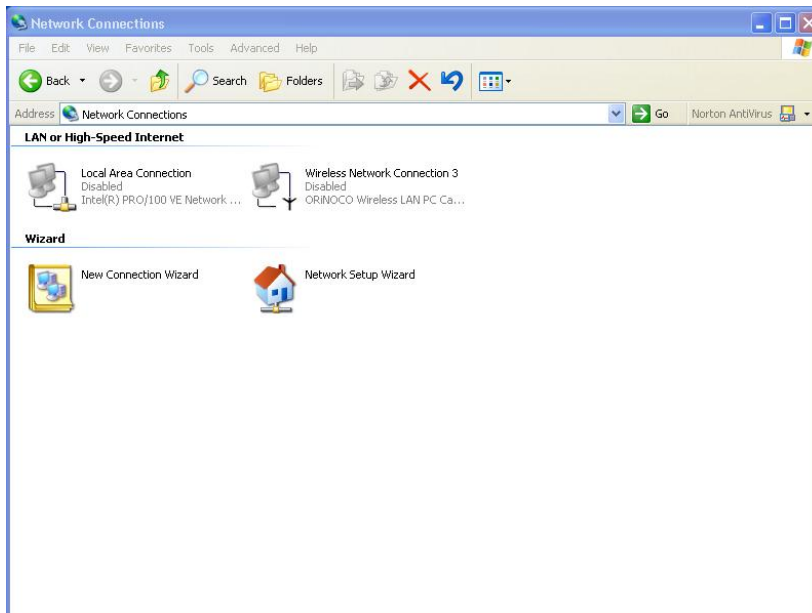
## WINDOWS XP Wireless Zero Configuration

\* *Windows XP users: Windows XP has a built-in configuration tool. Use Windows XP Wireless Zero Configuration (in the bottom right hand corner of your screen) to configure your Wi-Fi PC card or imbedded Wi-Fi Antenna.*

1. After installing your PC card or if you have built a built in Wi-Fi antenna, insure your wireless device is enabled. To do this click on **START**, select the **CONTROL PANEL**, and open the **NETWORK CONNECTIONS**. Your **WIRELESS NETWORK CONNECTION** should have the word **ENABLED**.



If it is **DISABLED**, enable it by right clicking on **WIRELESS NETWORK CONNECTION** and select **ENABLE**.



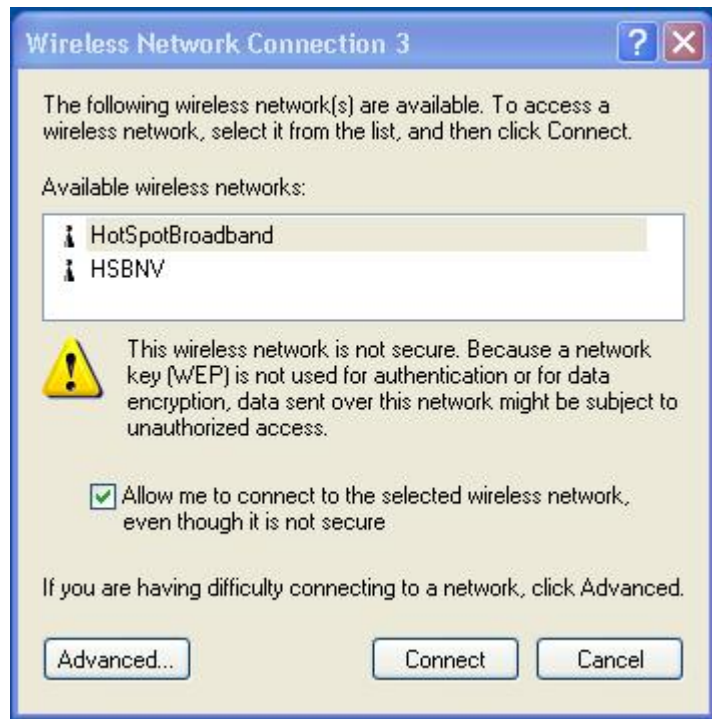
2. Once your Wi-Fi Antenna is active a balloon will pop up in the lower left hand corner of your computer informing you that **“One or more wireless networks are available”** click on the balloon.



If the balloon does not appear you can double-click the **NETWORK CONNECTION** Icon in the system tray.



3. A new window will appear listing all of the wireless networks that your Wi-Fi device detects. Highlight the network with the name **“HotSpotBroadband”** Make sure the small box next to the sentence **“Allow me to connect to the selected wireless network, even though it is not secure”** is checked. The **Connect** button should now be selectable. Click the **Connect** button.



4. A few moments later, another balloon should appear in the lower left hand corner telling you that you are



**“Connected to: HotSpotBroadband”** and what your signal strength is.

### **You are now online!**

Please open your favorite web browser to sample lightning fast Internet access courtesy of this establishment. For full Internet access, direct your browser to any other web page to view our sign up page. Sign up and enjoy full broadband access.

## **Basic Troubleshooting:**

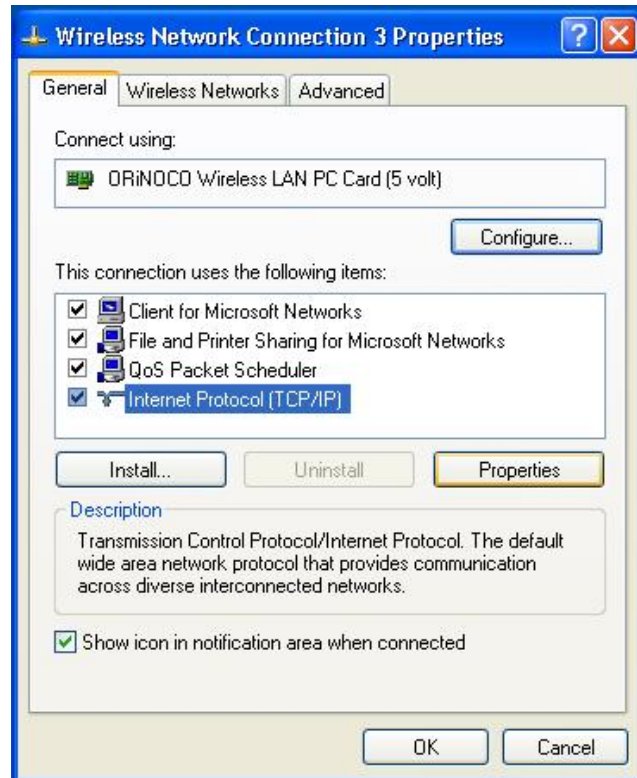
If you open your web browser and you do not get a web page verify that your **WIRELESS NETWORK CONNECTION** has been set to obtain an IP address automatically.

To do this click on **START**, select the **CONTROL PANEL**, and open the **NETWORK CONNECTIONS**.

*Right* click on the **WIRELESS NETWORK CONNECTION** and select **PROPERTIES**.

The **Wireless Network Connection # Properties** window will appear.

Highlight **Internet Protocol [TCP/IP]** and select the **PROPERTIES** button.



The **Internet Protocol [TCP/IP] Properties** sub-window will appear.

Make sure the radio buttons **OBTAIN AN IP ADDRESS AUTOMATICALLY** and **OBTAIN DNS SERVER ADDRESS AUTOMATICALLY** are selected.

Click **OK** to close the **TCP/IP** sub-window, and click **OK** again to close the **Wireless Network Connection # Properties** window. Attempt to open a web page again. If you still cannot get a web page to display, please call our technical support hot line at **775.284.9434**.

